

EUROPEAN
SPACE
WEEK

#EUSpaceWeek

ONLINE EDITION

Review of EU GOVSATCOM user needs and use cases



UCP GOVERNMENTAL Session – Virtual Event, December 2nd 2020



Sergio Albani, Paula Saameno
European Union Satellite Centre

Organised by:



European
Global Navigation
Satellite Systems
Agency



Under the auspices of:



EU Space Programme:



Copernicus

EGNOS



Content

- Introduction
- Secure SATCOM User Needs - Background
- ENTRUSTED Workflow
- User Communities
- Fields of Application and Use Cases
- Summary of User Needs
- Way Forward within ENTRUSTED



Introduction

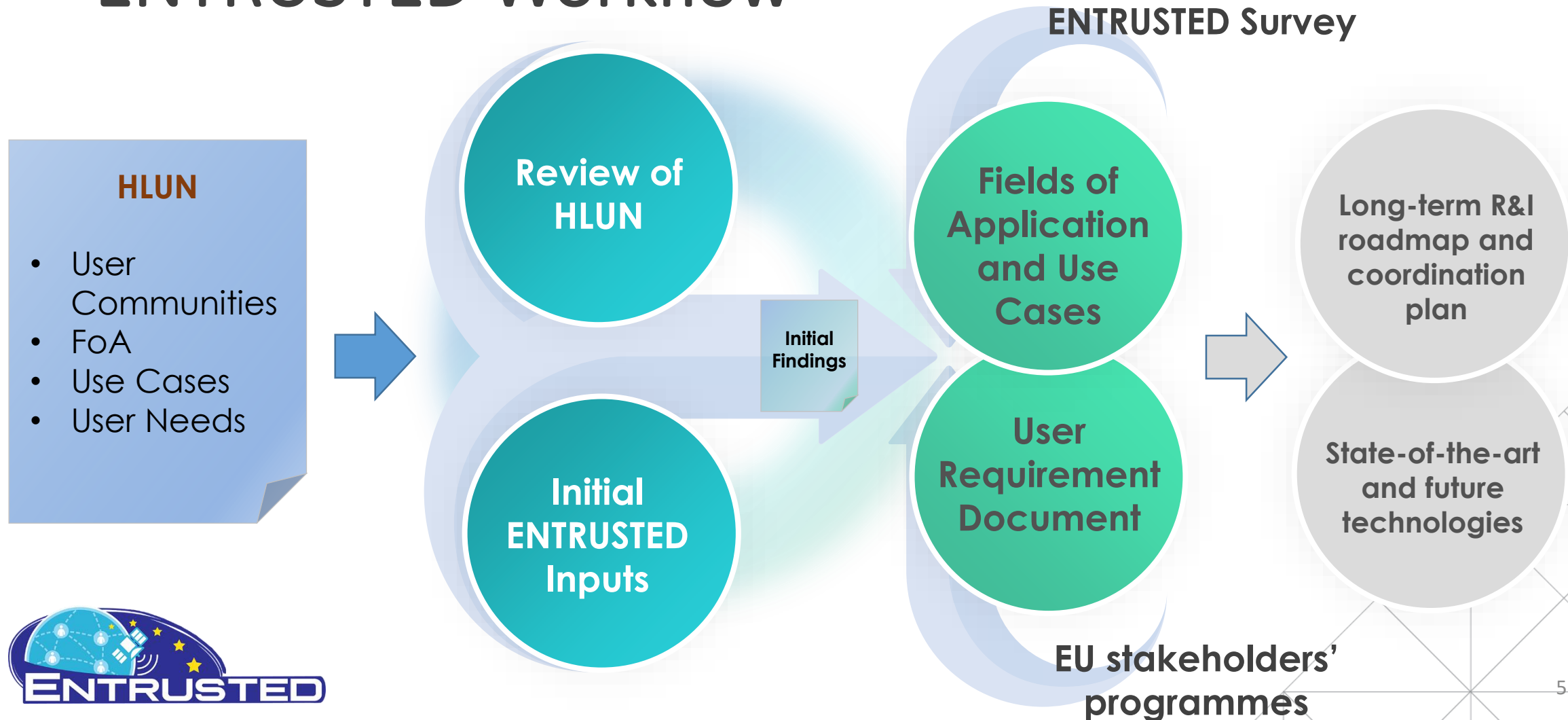
- The **ENTRUSTED** project aims at establishing a solid **Network of governmental Users (NoU) of secure SATCOM services** and at setting the scene for a potential future EU GOVSATCOM programme
- Current activities are focusing on:
 - Identifying all potential **Users** of secure SATCOM services and the respective **Use Cases**
 - Structuring the Use Cases in different **Fields of Application (FoA)** to support an efficient specification of the services
 - Reflecting User Needs in a consolidated **User Requirements Document**



Secure SATCOM User Needs - Background

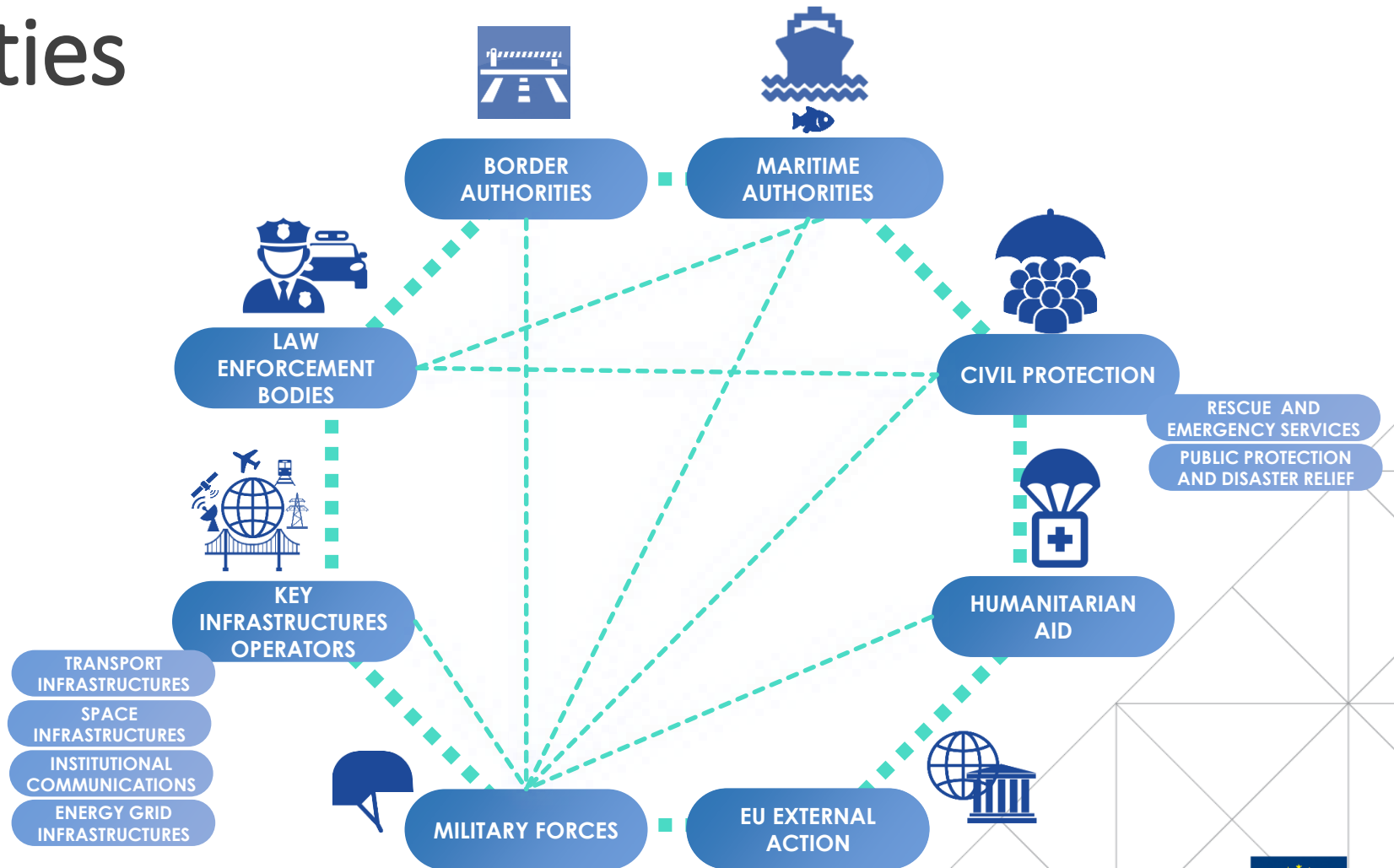
- In the last years, EU Member States (in coordination with relevant EU entities) have been working in different activities related to **secure SATCOM**
- **The High Level Civil-Military User Needs** for Governmental Satellite Communications (HLUN)¹ document was one of the outputs
 - It was developed in cooperation between EU Member States, EC, EEAS and EDA
 - It is now used within ENTRUSTED as reference to advance in the specification of future secure SATCOM user requirements
 - It has been reviewed by ENTRUSTED partners to identify updates and missing points

ENTRUSTED Workflow



User Communities

- Potential users of GOVSATCOM services are identified from User Communities
- Synergies between communities are present in some cases, depending on the specific use case and country



Fields of Application

- To structure the specification of future services, GOVSATCOM user requirements will be gathered for the relevant Use Cases and grouped by Fields of Application

Surveillance

Crisis Management

Key Infrastructure

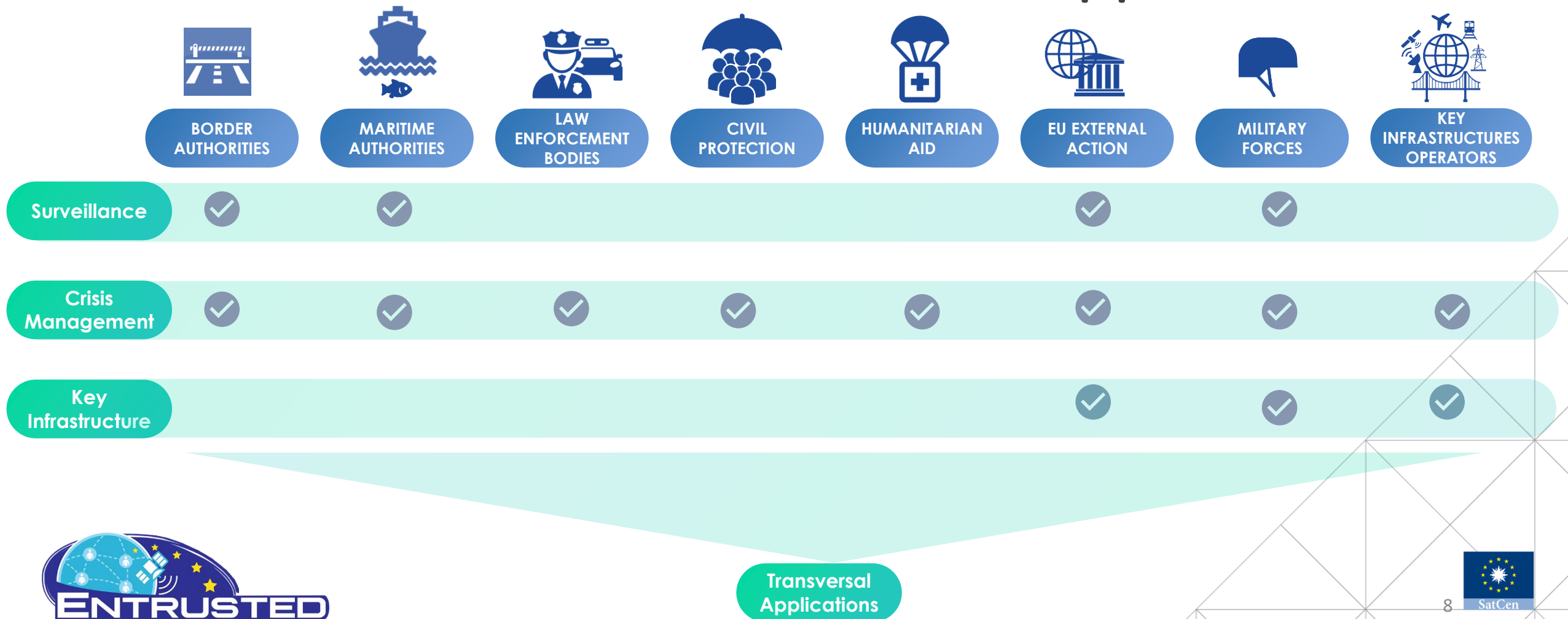
Polar regions users

RPAS Beyond-line-of-sight communications

Machine-to-Machine communications and IoT

Specific Use Cases
(Transversal applications)

User Communities and Fields of Application



Surveillance: Use Cases

BORDER SURVEILLANCE & CONTROL

- 01 Sea border scenarios
- 02 Land border scenarios
- 03 Pre-frontier scenarios
- 04 Military operations (CSDP & national missions)

MARITIME SURVEILLANCE & CONTROL

- 01 Safety and surveillance maritime traffic
- 02 Maritime security: Illegal activities
- 03 Maritime security: Fishing activity control
- 04 Military operations

Crisis Management: Use Cases

MARITIME EMERGENCY

- 01 Maritime Search and Rescue (SAR)
- 02 Response to maritime disasters (civil and military)

HUMANITARIAN AID

- 01 Assistance in case of disasters and armed conflicts
- 02 Telemedicine

CIVIL PROTECTION

- 01 Response to natural and man-made disasters
- 02 Ambulance and fire risk rescue response within EU

LAW ENFORCEMENT INTERVENTIONS

- 01 Fight against international drug traffic
- 02 Fight against international Organized Crime Groups (OCG)
- 03 National police missions within EU

EU EXTERNAL ACTION

- 01 Civilian CSDP crisis management or police operations outside the EU
- 02 Election observation
- 03 Military CSDP missions

Key Infrastructures Operations: Use Cases

TRANSPORT INFRASTRUCTURES

- 01 Air traffic management
- 02 Rail traffic management
- 03 Road traffic management

SPACE INFRASTRUCTURES

- 01 Enhancement of G.S. infrastructures, services and service synergies:
 - Copernicus
 - EGNOS and Galileo
 - EUSST network
- 02 Protection and enhancement of Military space infrastructures

INSTITUTIONAL COMMUNICATIONS

- Communication services for:
- 01 • National diplomacy
 - 02 • the 139 EU delegations
 - 03 • The 46 ECHO field offices
 - 04 • EU High & Special Representatives
 - 05 • EUROPOL network
 - 06 • Police routine operations

ENERGY INFRASTRUCTURES

- 01 Backup link for energy grid infrastructures

Specific Use Cases for Civil and Military Users

POLAR REGIONS

- 01 Surveillance services
- 02 Diplomatic activity
- 03 Protection of space infrastructure
- 04 Air Traffic Management (ATM)
- 05 Crisis management missions

RPAS / BLoS COMMUNICATION

- 01 RPAS Command & Control communications
- 02 RPAS sensor data transmission

M2M & IoT COMMUNICATION

- 01 Secure and cost-effective M2M communications
- 02 IoT secure applications

User Needs Review

Common Needs

01

- Guaranteed service provision
- Avoidance of interception and intrusion
- Interoperability and standards
- ...

FoA common needs

02

- Required geographical coverage
- Intercommunication needs within different missions in the field
- User terminal needs
- ...

Use Case specific needs

03

- Type of content and service needed
- Time to activation of service
- User Terminal needs (if specific for the use case)
- ...

User Requirements

- ENTRUSTED will work in the **translation of needs into requirements**, with the objective of generating a solid and consolidated URD
- Requirements will be specified to **satisfy service user needs and expectations**, also considering the **GOVSATCOM programme environment** (e.g. EU and MS related actions and initiatives)
- The associated requirements will be **grouped accordingly to the Fields of Application and associated Use Cases identified**, to efficiently address the different services

Way Forward

- **ENTRUSTED** will launch a **survey** with the objectives of gathering governmental **user requirements** for GOVSATCOM to go one step forward in the specification of future services, identifying **new use cases**, and **enlarging the NoU**
- Answers will be collected, analysed and processed to **generate a consolidated User Requirement Document** that will serve as baseline for potential associated developments
- The User Requirement Document will support the identification of **key and enabling technologies**, and the elaboration of a **long-term R&I roadmap and coordination plan** to support future activities

Join the Secure SATCOM Network of Users!

How to get in touch:



European
Global Navigation
Satellite Systems
Agency

entrusted@gsa.europa.eu

ENTRUSTED Partners:



Austria



Cyprus



Luxembourg



Romania



Malta



Finland



Greece



Spain



Netherlands



France



Poland



Italy



Portugal



GSA

GSA



JRC



SATCEN



European Union
EXTERNAL ACTION

EEAS



EFCA



EMSA



EDA



EUROPOL



SatCen